

Larenim Park, Patterson Creek Road,
Burlington, WV 26710

Larenim Park is located off Patterson Creek Road in Burlington, WV. Larenim includes over three miles of hiking trails, two fishing lakes, two ball-fields, an amphitheater, and an arboretum.



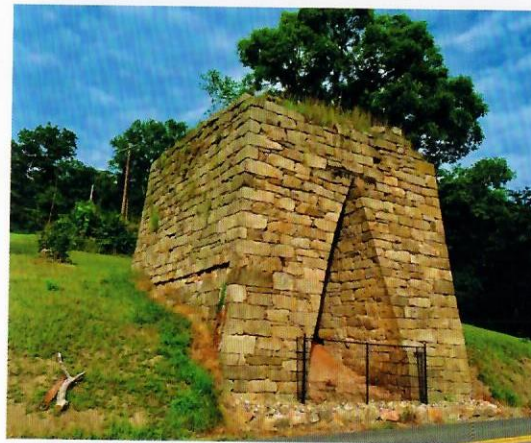
Barnum (Blue Hole), Barnum WV
Lat: 39°26'42.4" Long: 79°06'38.9"

Barnum offers some of the best trout fishing in the area. Fly fisherman will love to hop in their waders and cast a line out. Kayaking is a must, especially on whitewater release dates. Enjoy primitive style camping as well.



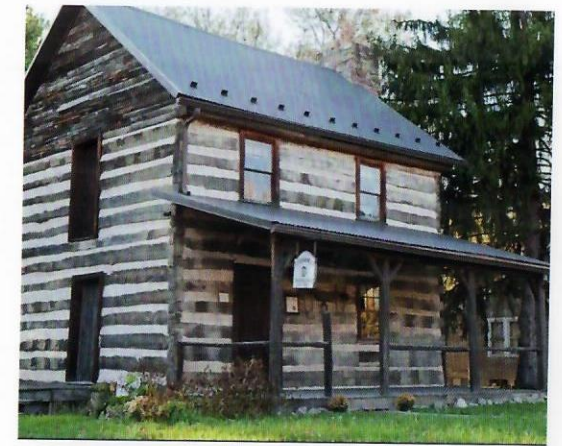
Jennings Randolph Lake, 1700
Jennigs Randolph Lane, Elk Garden,
WV 26717

Come enjoy boating, fishing, camping, hiking, swimming, archery and more. Take the family and stay a while! Make sure you check out Waffle Rock while you're there!



Old Iron Furnace, Old Furnace
Road, Short Gap, WV 26753

Located on Old Furnace Road in Short Gap. Originally built in the early 1800's, it was used to produce low grade iron. To this day, it remains one of the most well constructed furnaces of it's kind. It is now owned by the Frankfort Historic District.



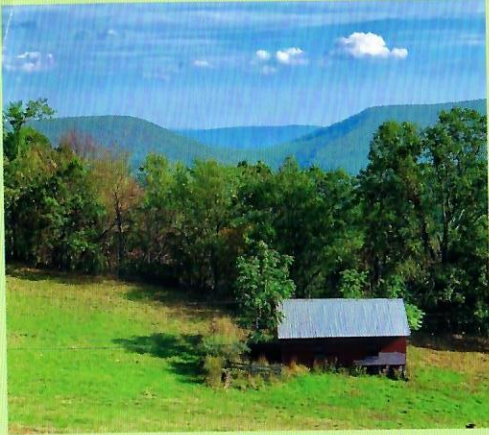
Stewart's Tavern, Short Gap Road,
Short Gap WV 26753

The Tavern was built around 1790 and was used as a Tavern/Inn along Frankfort Road between Fort Ashby and Washington Bottom Farm. It is believed that many Revolutionary soldiers have stayed there.



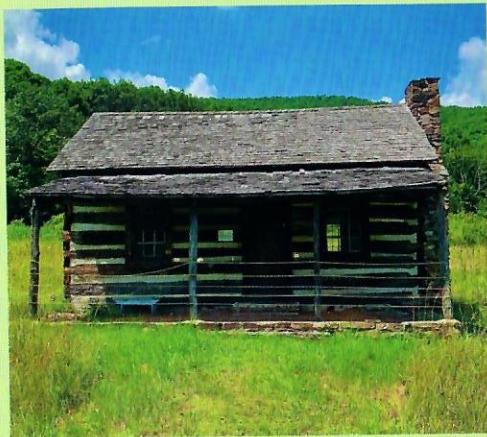
Greater Cumberland Regional
Airport, 165 Terminal Loop, Wiley
Ford, WV 26767

The Gohongaronta Museum is located on the second floor of the terminal. Stop by and learn about the history of Mineral County in regards to aviation, automotive, and much more. The Airport is open 7 days a week from 8am-8pm.



Saddle Mountain Overlook, West along Route 50 at intersection with Route 42

The nickname "Saddle Mountain" is given to the natural depression in the New Creek Mountain. A pull off is available along Route 50 between Keyser and Elk Garden for viewing.



Nancy Hanks Cabin, Nancy Hanks Road, Antioch, WV 26710

This replica cabin sits on what is believed to be the birthplace of Abraham Lincoln's mother, Nancy Hanks. Joseph Hanks, Lincoln's great-grandfather, came to Mineral County in 1781 and left in 1784.



Hours of Operation

Day	Hours
Monday	9:00am - 4:00pm
Tuesday	9:00am - 4:00pm
Wednesday	9:00am - 4:00pm
Thursday	9:00am - 4:00pm
Friday	9:00am - 4:00pm
Saturday	Closed
Sunday	Closed

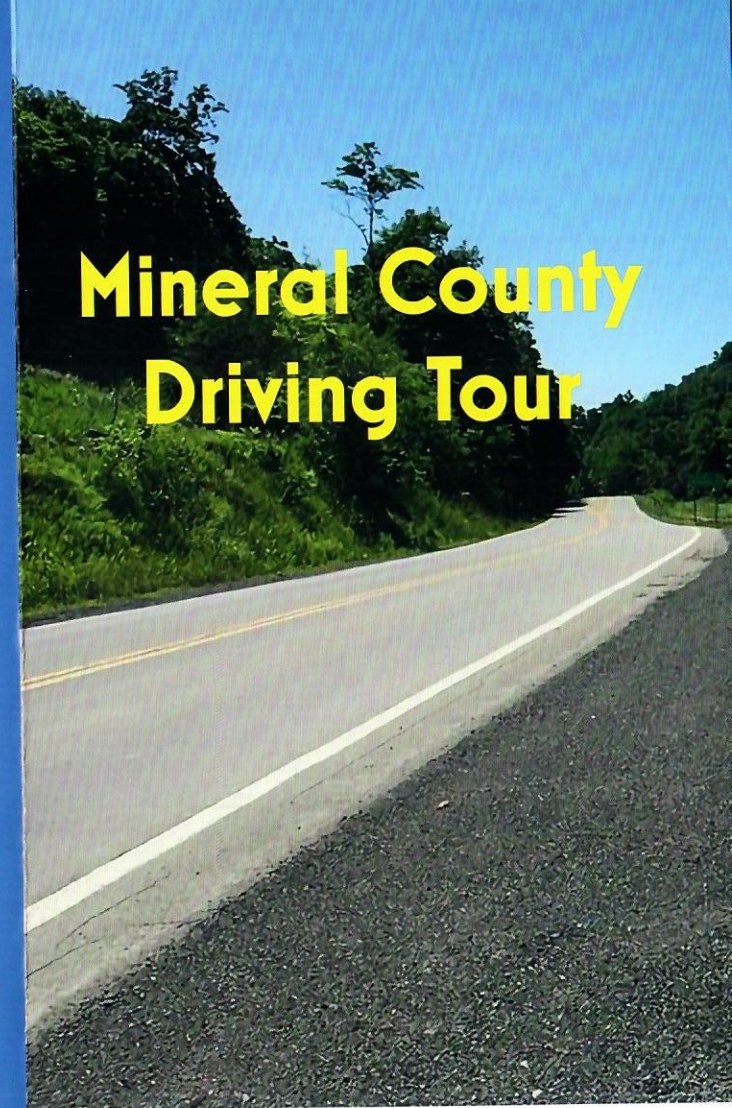
Executive Director: Ashley Centofonti

For more things to do in Mineral County visit our website at www.govisitmineralwv.com

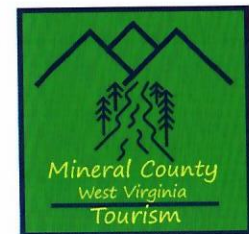
Or call the office at 304-790-7081

Follow us on Facebook by searching Mineral County Tourism

Follow us on Instagram by searching "mineralcocvb"



Mineral County Driving Tour



**Mineral County
Tourism**

www.govisitmineralwv.com