

# Go Visit Mineral

## Mineral County, West Virginia

### Travel Guide

[www.govisitmineralwv.com](http://www.govisitmineralwv.com)

304-790-7081





# Welcome to Your Home Away From Home!



*"We'd like to personally welcome you to our beautiful home within the mountains, Mineral County! The Potomac Highlands region of West Virginia is privileged to be home to beautiful outdoor recreation and rich history and Mineral County is no exception. From visiting local historic sites, to paddling the North Branch of the Potomac River, or spending the day at Jennings Randolph Lake, adventure and excitement await you at every turn.*

*In this guide, you will find everything necessary to plan a vacation that will leave you feeling relaxed! Let us suggest places to eat, play, visit, and stay to make your experience unforgettable. We hope you enjoy your time with us and we look forward to your visit to your home away from home!"*







Rest.  
Relax.  
Recharge.



The Keyser Inn



Hotels aren't your style? Check out alternate stays within Mineral County on your favorite vacation rental website!

Pictured left: Nacho House, Keyser, WV  
Pictured right: Glamping A-frame in Elk Garden, WV



# Jennings Randolph Lake

Elk Garden, WV



## WV Overlook & Waffle Rock

The Overlook provides a panoramic view of the dam, outlet works, and lake. This overlook is also home for the "Waffle Rock", a rare geologic structure that is a portion of the sandstone bedrock that was folded and fractured during the formation of the Appalachian Mountains over 300 million years ago.



## Picnic Area

The picnic area includes 3 covered pavilions that hold up to 50 guests, picnic tables, grills, restroom facilities, playground, sand volleyball court, horseshoe pits, and more! You must reserve a pavilion through the Army Corps of Engineers.

\*Picnic Area pictured above.

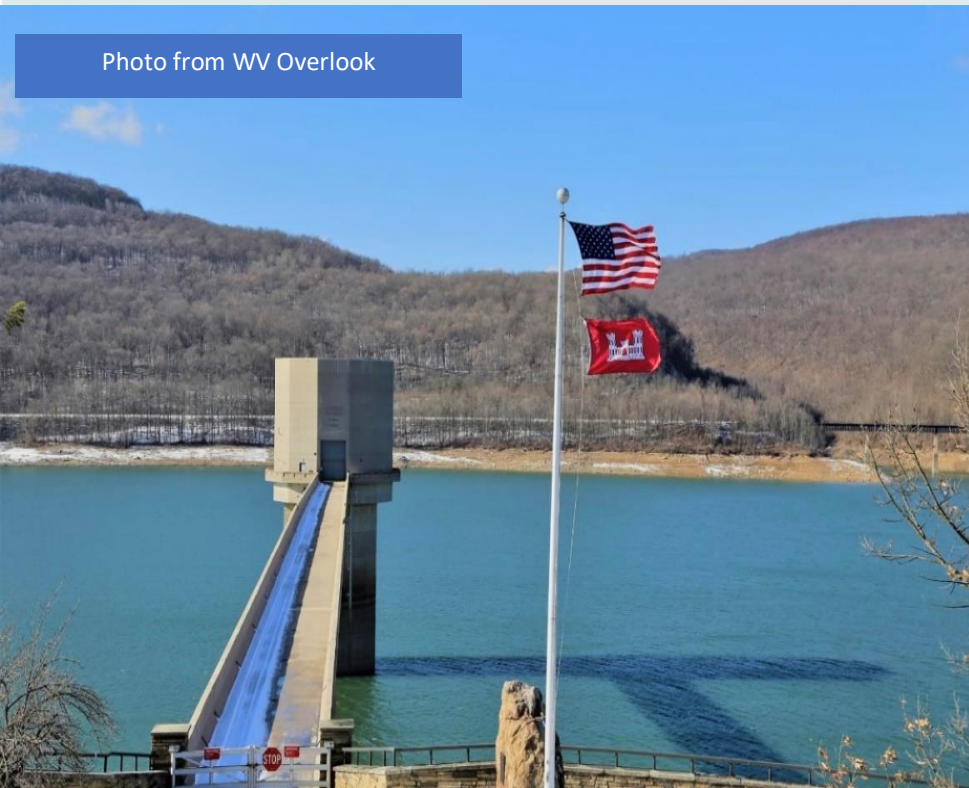


An aerial photograph of Shaw Beach, showing a parking lot with many cars, a paved walkway, a sandy beach area with people, and a grassy area with trees. The beach is situated on a peninsula with water on both sides.

## Shaw Beach

Shaw Beach is a 200ft swim beach with a changing station/restroom, wash station, playground equipment, and more. Life guards are not present but safety throwing rings are available. Beach rules and regulations are posted on the bulletin board.

Photo from WV Overlook



## Howell Boat Launch & Fishing

The boat launch is located off Route 46 and consists of a two-lane concrete ramp with a floating dock for temporary loading and unloading boats. Motorboats, sailboats, & other watercraft frequent the lake with water skiing and fishing being the most popular.

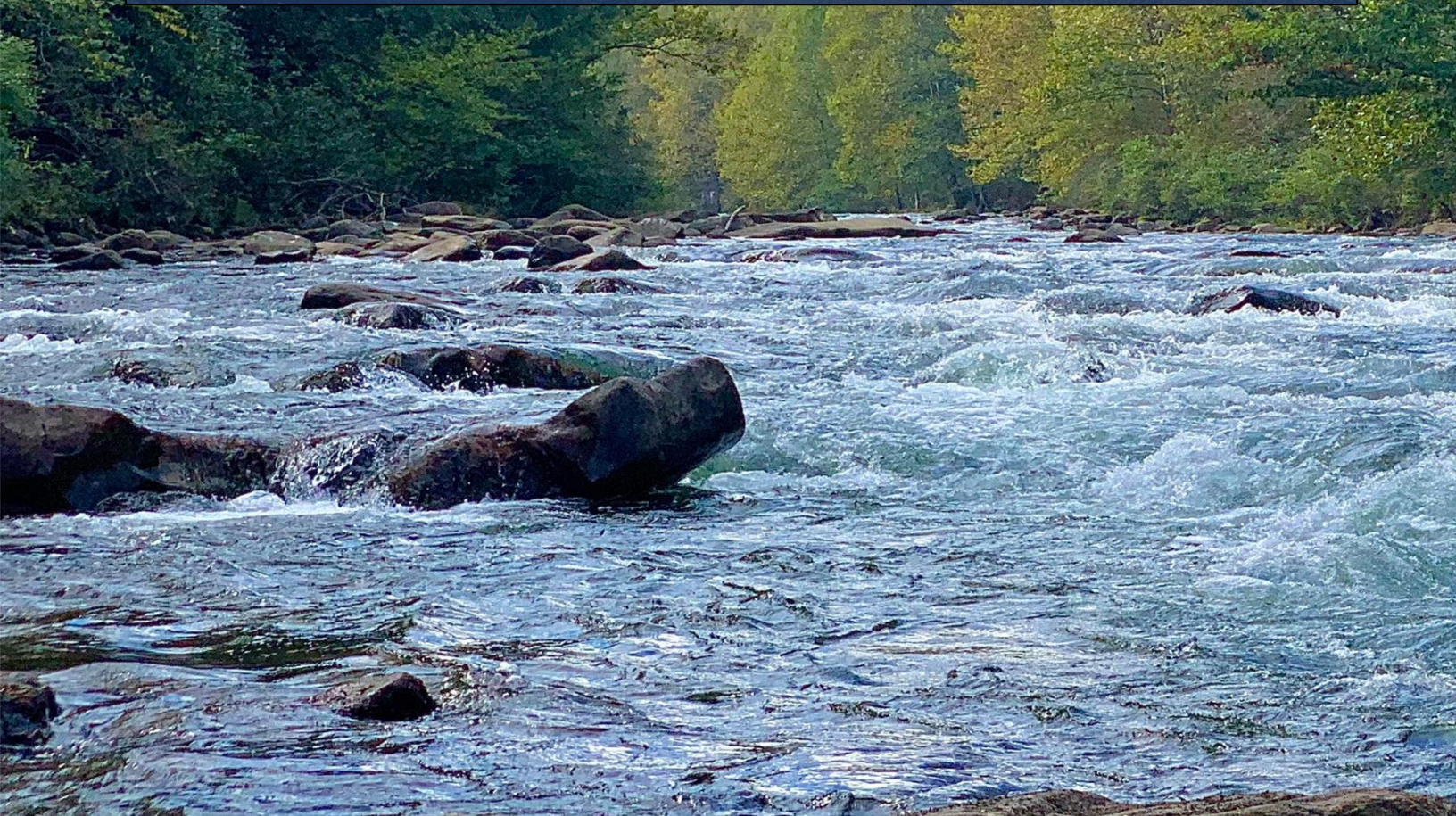
The lake is primarily stocked with trout, but also has large & small mouth bass, and walleye.



# Barnum Whitewater Area

## Barnum, WV

The North Branch of the Potomac is a whitewater rafting river for the entire family. Whitewater releases from Jennings Randolph Lake tumble down a continuous gradient of sand stone ledges and cobbles providing Class I, II and III rapids in close succession and are comprised of waves and rollers up to six feet high. Short spells of calm water permit bailing, relaxation and swimming. Trip length is 7 miles. The launching area is located in the Barnum Whitewater Area (BWA). Parking and restroom facilities are available at the launch site. The Mineral County Parks & Recreation Commission has instituted a \$2.00 per person fee for all individuals entering BWA on release dates. Each release is from 10am-4pm.







## **Whitewater Release Dates:**

April 15-16 & 29-30

May 13-14 & 27-28

## **Artificial Varied Flow Dates:**

August 26-27

September 16-17



# Back to Nature!

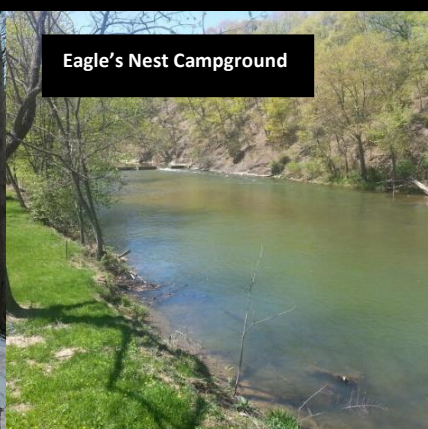
Looking to getaway in the great outdoors? Mineral County Parks and Recreation has ten primitive cabins and nine tent sites available for rent in the Barnum Whitewater Area. A water-less restroom facility is located in the parking area. Cabin fees are \$35.00 per night for small cabins which sleep four to six and \$56.00 per night for larger cabins which sleep eight to ten. Tent sites are available to rent for \$10/night.

Cabin & tent rentals can be made by contacting Program Manager, Cody Jose by calling 304-788-5732.

*\* Cabin fees are subject to change without notice \**



The Wildflower



Eagle's Nest Campground



Robert W Craig  
Campground

Jennings Randolph Lake

Mineral County offers 2 campsites and a "glamping" site for those looking to escape from traditional hotel rooms.

The Wildflower on Abrams Creek- Elk Garden  
Eagle's Nest Campground- Fort Ashby  
Robert W. Craig Campground- Elk Garden

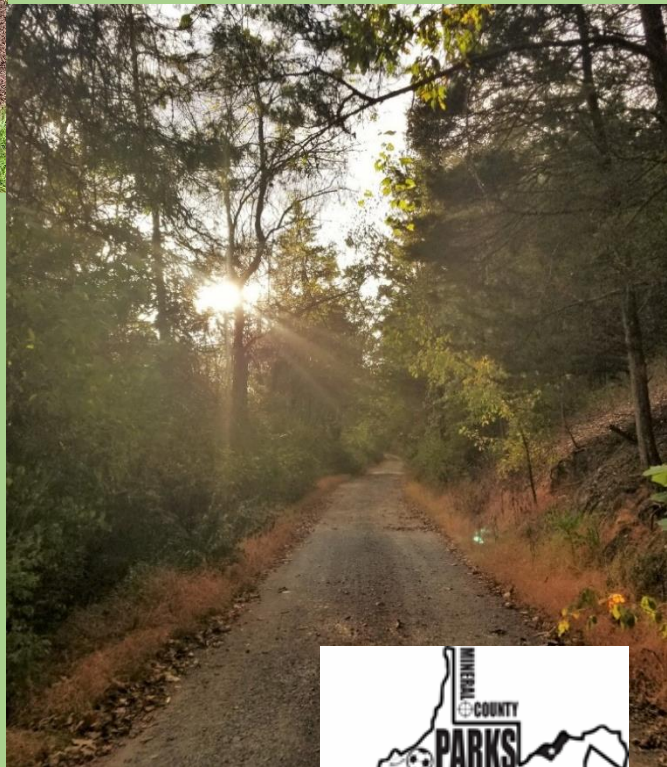




Larenim Park is located is a 373-acre park in Burlington that is owned by the Mineral County Commission. The park facilities include...

- 3 soccer fields, 4 ballfields (softball and baseball)
- 2 pavilions
- Flood control dam stocked by WVDNR
- Approximately 5 miles of hiking trails
- Arboretum
- Gold Star Mothers Memorial Orchard and Bench
- Playground

The West Virginia Gold Star Mothers, an affiliate of the American Gold Star Mothers, are a group of mothers who have lost children in military combat. The Memorial Orchard & Bench allow individuals and families to visit, reflect, and remember their loved ones who have perished while serving.



Larenim Park is located at 1 Thespian Drive, Keyser, WV 26726

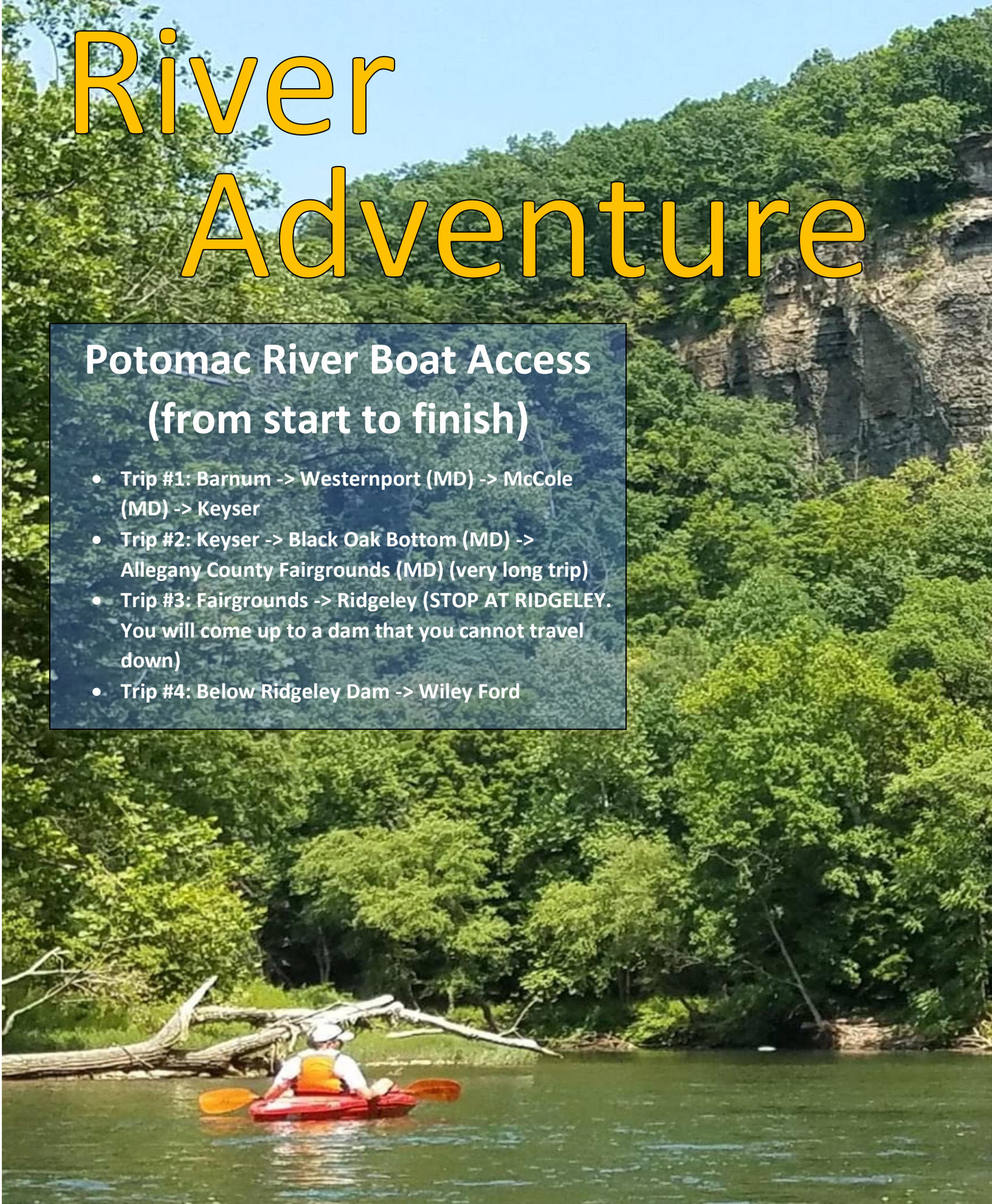
For more information about the park, please visit [www.mineralwv.org/parks-and-recreation/](http://www.mineralwv.org/parks-and-recreation/)



# River Adventure

## Potomac River Boat Access (from start to finish)

- Trip #1: Barnum -> Westernport (MD) -> McCole (MD) -> Keyser
- Trip #2: Keyser -> Black Oak Bottom (MD) -> Allegany County Fairgrounds (MD) (very long trip)
- Trip #3: Fairgrounds -> Ridgeley (STOP AT RIDGELEY. You will come up to a dam that you cannot travel down)
- Trip #4: Below Ridgeley Dam -> Wiley Ford







## Patterson Creek Boat Access (from start to finish)

- Burlington (Rt.50 Bridge)
- Larenim Park
- Headsville Bridge

## Clyde's River Guides & Outfitters

155 Burkhart Road  
Ridgeley, WV 26753  
240-378-0830



## A Step Back in Time...



Are you a history buff? Historical sites within Mineral County date back to before the French & Indian War. From the French & Indian War, to the Civil War, and beyond, Mineral County has played a role through some of the most pivotal times in our nation's history. A young George Washington spent a great deal of his time here!

Each site gives you a chance to learn about the people and the events that helped shape our state and our country into what it is today.



## Did You Know?

Nancy Hanks Lincoln, Mother to the 16<sup>th</sup> President of the United States, Abraham Lincoln, was born in present day Mineral County. It is believed that Nancy was born east of Saddle Mountain (pictured on the cover of this guide) and lived there until she and her mother were sent to live with family in Kentucky.



## Civil War Trails

Located at the Mary F. Shipper Library, on the Potomac State College campus, come learn about Keyser's Fort Fuller and the role it played during the Civil War.

The library is located at 101 Fort Ave, Keyser, WV 26726

## Local Historical Organizations

- ☼ Friends of Ashby's Fort
- ☼ Mineral County Historical Society
- ☼ Mineral County Historical Foundation
- ☼ Frankfort Historical Society
- ☼ Mineral County Genealogical Society



# The Museum at Ashby's Fort

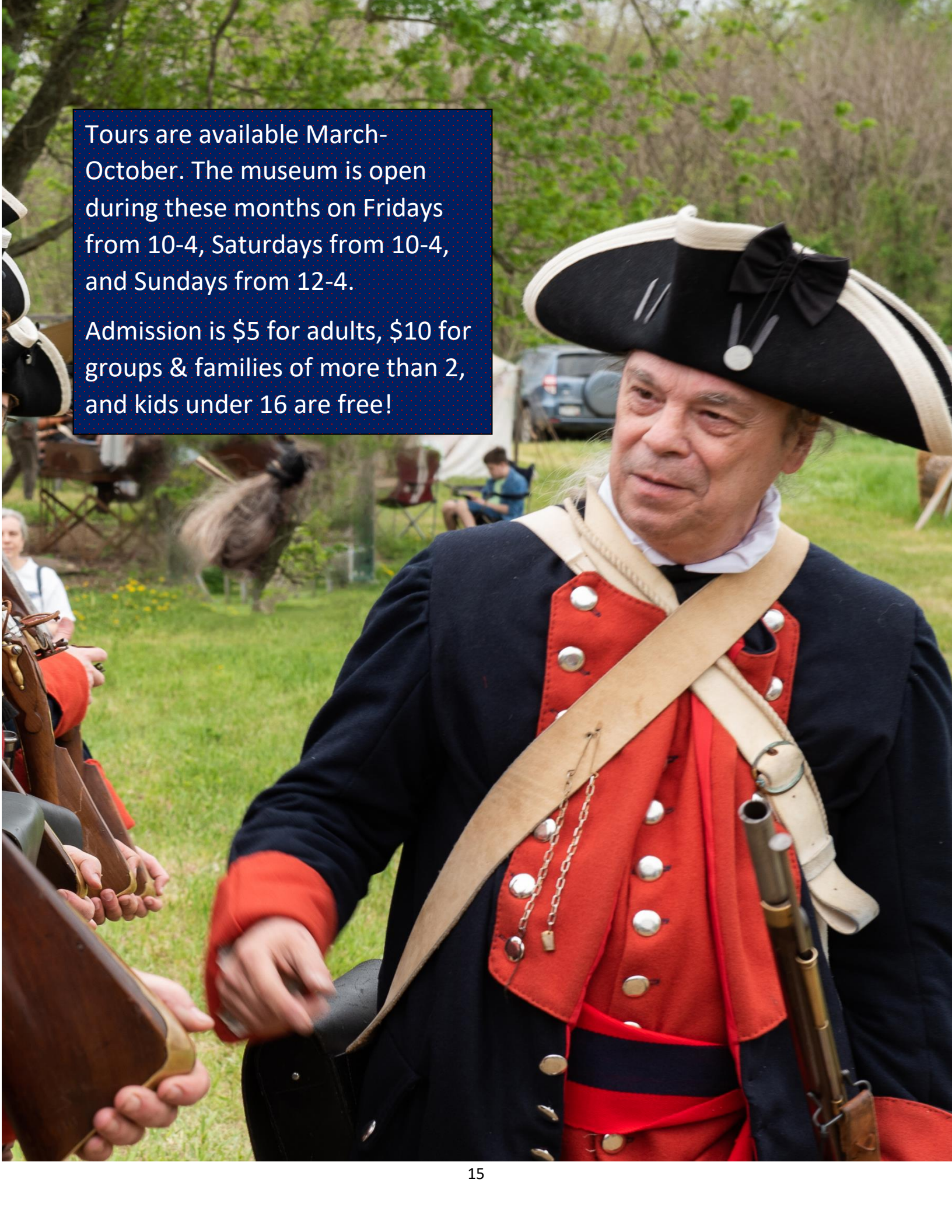
## Fort Ashby, WV

The  
**Museum**  
at Ashby's Fort

Come visit the site of one of the first two Forts built by George Washington during the French & Indian War. Visit the museum to learn about the prominent figures that occupied the area, learn about the battles that took place, and check out artifacts that have been found through archeological digs from the property itself!

301-697-9292 or [fortashby.org](http://fortashby.org) for more info.



A man in 18th-century military uniform, featuring a dark blue coat with red cuffs and lapels, a red waistcoat with silver buttons, and a black bicorne hat with a white band and a black bow. He is holding a sword in his right hand. The background shows a grassy field with trees and other people in period clothing.

Tours are available March-October. The museum is open during these months on Fridays from 10-4, Saturdays from 10-4, and Sundays from 12-4.

Admission is \$5 for adults, \$10 for groups & families of more than 2, and kids under 16 are free!



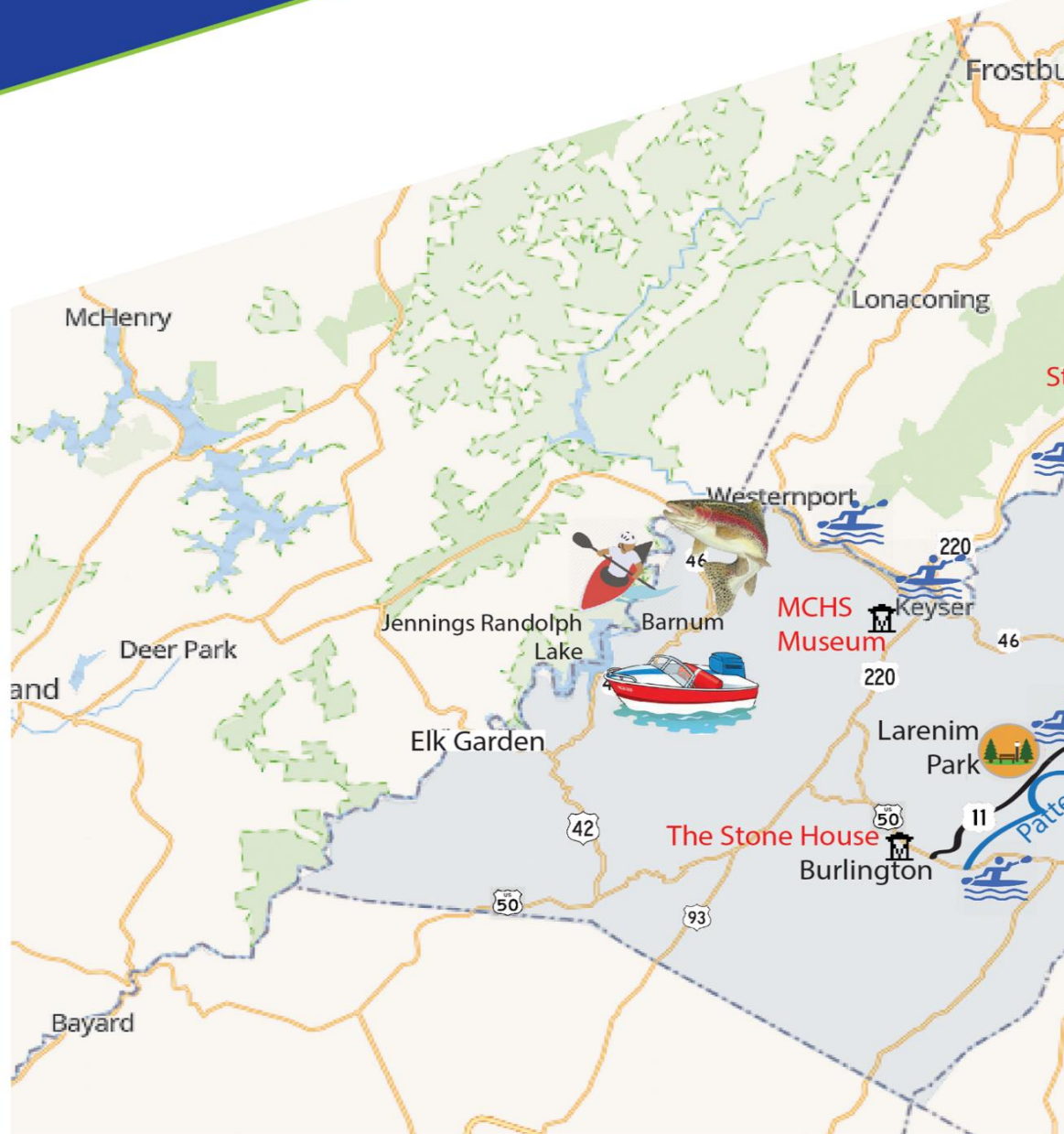


# County Map

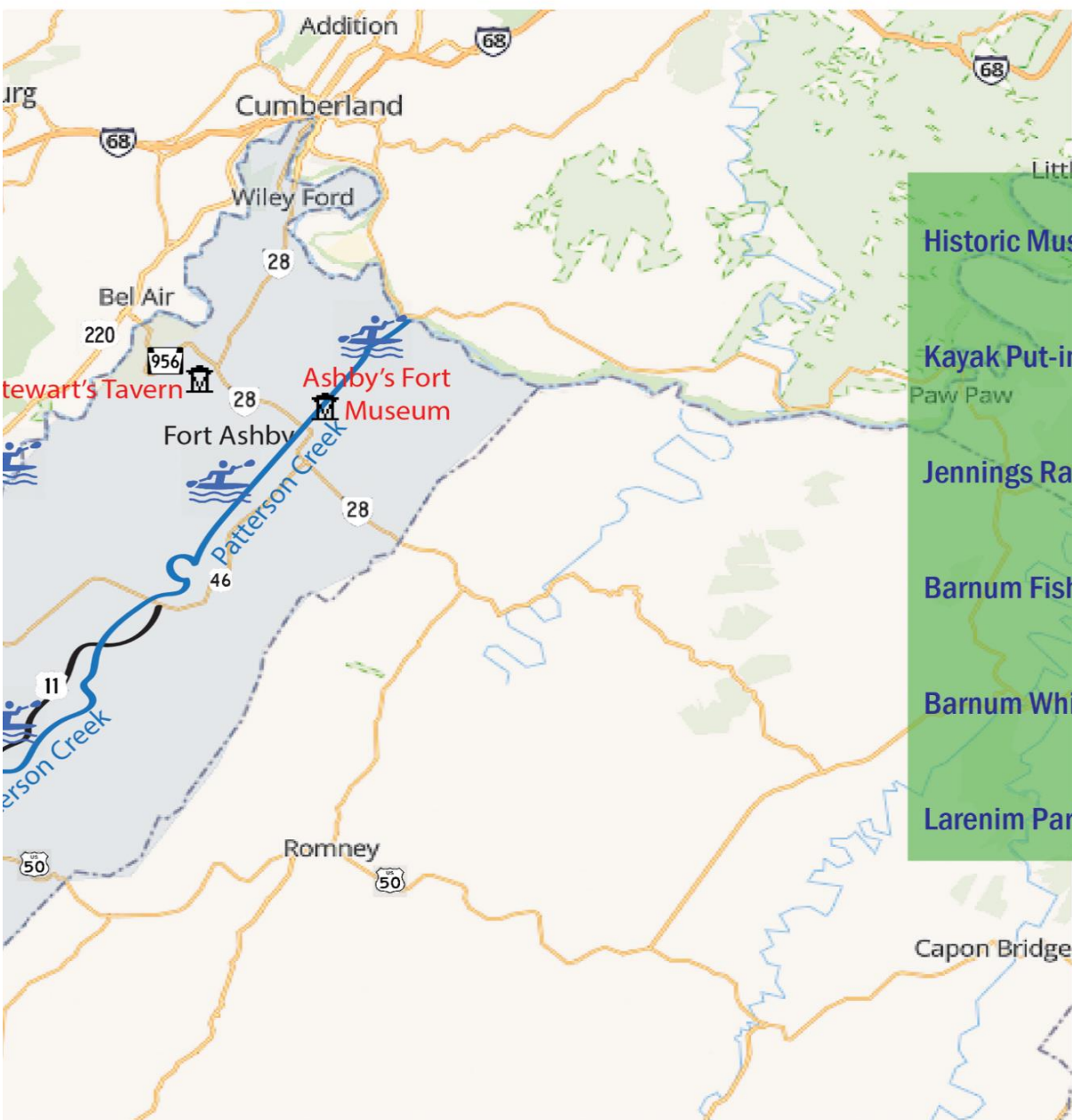
Mineral County is convenient to millions of people in the Mid-Atlantic region. Enjoy your trip on major interstate highways, or meander through the mountains to enjoy the scenery. We'll see you when you get here!

## Travel Time

City	Miles	Hrs
Baltimore, MD	210	4
Hagerstown, MD	88	1.5
Harrisburg, PA	161	2.5
Harrisonburg, VA	96	2
Martinsburg, WV	100	1.75
New York, NY	332	5.5
Philadelphia, PA	261	4
Richmond, VA	206	4
Roanoke, VA	208	3.5
Washington, DC	153	2.75
Winchester, VA	66	1.5







Historic Museums



Kayak Put-ins/Take-outs



Jennings Randolph Lake



Barnum Fishing



Barnum Whitewater



Larenim Park





# Ashby's Fort Museum

## Special Events



- Fort Ashby Days
- Loretta Hummel
- Shanty Irish
- Burt Kummerow
- Cider & Carols

1<sup>st</sup> Weekend in May

February 25th 7-9

March 25th 7-9

May 20<sup>th</sup> 7-9

1<sup>st</sup> Saturday in December

Check for additional events throughout the year on [fortashby.org](http://fortashby.org)

*\*Dates and times are subject to change\**



# Ashby's Fort Museum

## Concerts

Check [fortashby.org](http://fortashby.org) for upcoming concerts either in the log building or the new concert pavilion.

Scheduled acts also include:

- JED Nation
- Briana Merkel
- The 249<sup>th</sup> Army Band
- Jim Morris & Critton Hollow String Band
- Plus, more!





## The Mineral County Historical Society Museum

opened its doors in Spring of 2019. The museum is dedicated to all aspects of the history of Mineral County. Displays featured include; the history of coal & mining, the railroad, music & entertainment, politics, and much more!

The museum is open April-October on Saturdays from 10-4. For more info, call 304-813-7473.







## Traveller's Rest / Old Stone House

is located between Keyser and Burlington along US Route 50 (Northwestern Turnpike). This historic home was constructed to be used as a stagecoach stop to service the Northwestern Turnpike between Winchester, VA and Parkersburg VA (now WV). Displays are also featured that highlight the Twin Mountain & Potomac Railroad that ran from Keyser to Northern Grant County hauling peaches and apples.







**Top Left: The Greater Cumberland Regional Airport-** The top floor of the Airport hosts the ***Cohongaronta Gallery***. This self-guided museum tells the history of aviation, automobiles, and general county history of both Mineral County & Allegany County in neighboring Maryland. The museum is open year-round from 9am-8pm.







**Bottom: Carskadon**

**Mansion-** The Carskadon Mansion is a post-Civil War mansion that was built & owned by Keyser native, emancipationist, and West Virginia Constitutional Convention member, Thomas Carskadon. The museum is open by appointment only at this time.

**Top Right: Stewart's**

**Tavern-** Stewart's Tavern is a late 1700's Inn located in Short Gap. During the 1770's it is said that future President, George Washington spent the night at the Inn on his way to western Pennsylvania. The Tavern is open by appointment only at this time.



# Brookedale Farm



## Brookedale Farm Offers:

- Greenhouse from March-June. The greenhouse offers hanging baskets, unique potted plants, combo planters, succulents, garden flats, and assorted vegetables.
- Fall Corn Maze & other family friendly activities from mid-September-beginning of November. The fall weekend activities include hayrides, a petting zoo, pedal kart track, playhouses, and more! Admission is \$6 and children under 2 are free!
- The Stadell (pictured above right), is available for weddings and other events all year. The Stadell was nominated by West Virginia Wedding Magazine in the “Best of Barn, Farm, or Cabin Venue” category!
- 304-298-3760 for more information









## Flying W Farms Offers:

Farm store with restaurant (open Friday and Saturday), crafts & other products, meat processing, and produce available for purchase. Call 304-289-3005.

## Higson's Farm offers:

Produce available for pickup, pick-your-own produce, pumpkins, and more! Call 304-738-8946.

\*Pictured below with pumpkins







## Potomac State College SAGE Farm Store (Keyser): Right

This shack is run by the students in the SAGE program at Potomac State College. Syrup, apple butter, meats, flowers, and more are available for purchase!



## Indian Water Maple Company (New Creek): Left

Indian Water Maple Company is a family-owned business for over 30 years. Indian Water Maple produces maple syrup, maple candy, and more! Tours are available anytime! Call 304-788-1831 to schedule your tour today!

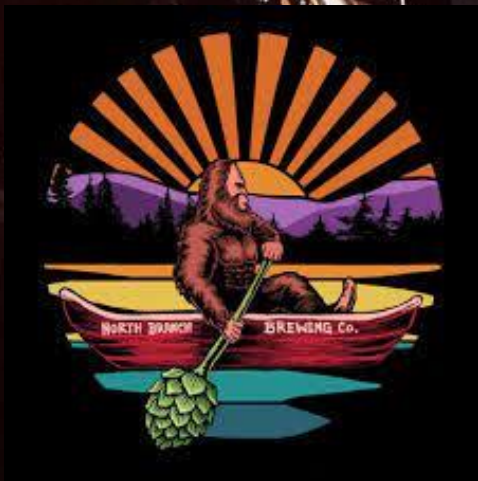


Pictured are products sold by PSC SAGE & Indian Water Maple Company.





# Tap In & Drink Local!



Stop by **North Branch Brewing Company** in Keyser and tap in to their fresh, brewed on-site craft brews. Many other craft beers are on tap from West Virginia and the best of the rest. Check out the weekly food specials and enjoy the great pub atmosphere, with local music, trivia, and other fun happenings!

101 Armstrong Street in Keyser

SAVE WATER  
DRINK  
BEER  
North Branch Pub

**HOOVERS**  
304  
"Pourhouse & BBQ JOINT"

**Hoovers Pourhouse & BBQ Joint** will quench your thirst and fill your belly with the best BBQ around after a long day sightseeing. Hoovers is a favorite with the locals, so get in on the secret!

7859 Northwestern Turnpike (Route 50)  
Keyser, WV



# CROSS HAIRS INDOOR SHOOTING RANGE

*Where Memories Are Made*



**Open Tue-Sat 10am-6pm**

322 Ft. Ashby Rd., Ft. Ashby, WV  
(304) 298-4414

[www.crosshairsindoorgunrange.com](http://www.crosshairsindoorgunrange.com)

**Open to the Public!  
All Ages Too!**

- ✓ Rental Pistols & Full-Auto Machine Guns
- ✓ NRA-Certified Instructors on Staff

## Range Hours

Sunday: Closed

Monday: Closed

Tuesday: 10am-6pm

Wednesday: 10am-6pm

Thursday: 10am-6pm

Friday: 10am-6pm

Saturday: 10am-6pm



## Other Offers

- Event & Party Bookings
- Classes (Intro to shooting, Carry with Confidence, Wear & Carry Permit Training, Women's Only Courses, and more!)
- Custom Cerakote
- Laser Engraving
- Purchase firearms, ammo, apparel, and more!



# Dining

Chef Paul's Kitchen & Catering  
7 Potomac Street  
Ridgeley, WV 26753  
240.727.3937

Corner Bistro & Vintage Market  
10248 Frankfort Highway  
Fort Ashby, WV 26719  
304.298.3242

Hummingbird Café  
18 Medevac Lane  
Wiley Ford, WV 26767  
304.738.4029

Flying W Farms  
2939 Northwestern Turnpike  
Burlington, WV 26710  
304.289.3005

Linda's Old Furnace Restaurant  
3429 Frankfort Highway  
Ridgeley, WV 26753  
304.738.7000

Royal Restaurant  
88 N Main Street  
Keyser, WV 26726  
304-788-9825

Hummingbird Feeder  
10208 Frankfort Highway  
Fort Ashby, WV 26719  
304.298.4020

Wilma's Diner  
10261 Frankfort Highway  
Fort Ashby, WV 26719  
304.999.2397

3<sup>rd</sup> Base Sports Bar & Grille  
2 Mineral Street  
Keyser, WV 26726  
304.790.7754

Clancy's Irish Pub  
777 Armstrong Street  
Keyser, WV 26726  
304.788.1133

Duckie's Bar & Grill  
100 Ashfield Street  
Piedmont, WV 26750  
304.355.8887

Hoover's Pourhouse & BBQ  
7859 Northwestern Turnpike  
Keyser, WV 26726  
681.589.1268

My Place  
121 Potomac Street  
Ridgeley, WV 26753  
304.738.8989

Orioles Club  
40 Keyser Square  
Keyser, WV 26726  
304.788.1338

Castiglia's Italian Eatery  
401 S Mineral Street  
Keyser, WV 26726  
304.788.1300

El Jinete Mexican Restaurant  
2505 New Creek Highway  
Keyser, WV 26726  
304.788.3553

Route 28 Bar & Grill  
8559 Frankfort Highway,  
Fort Ashby, WV 26719  
304.298.2184

Jin's Asian Cuisine 2  
196 N. Tornado Way,  
Keyser, WV 26726  
3304.788.2222

Long Spring  
220 Keyser Mall,  
Keyser, WV 26726  
304.788.8008

The Candlewyck Inn  
65 S. Mineral Street,  
Keyser, WV 26726  
304.788.6594

Countryside Inn & Tea House  
5128 Beaver Run Road,  
Burlington, WV 26710  
240.362.8327

Fox's Pizza Den (Keyser)  
567 S. Mineral Street,  
Keyser, WV 26726  
304.788.1149

Fox's Pizza Den (Fort Ashby)  
10107 Frankfort Highway,  
Fort Ashby, WV 26719  
304.289.4848

Shep's Pizza  
9 Hunt Club Drive,  
Ridgeley, WV 26753  
304.738.4042

Queen's Point Coffee  
101 Armstrong Street,  
Keyser, WV 26726  
304.790.7125

North Branch Craft Pub  
101 Armstrong Street,  
Keyser, WV 26726  
304.790.7125

M&S Bakery  
133 N. Main Street  
Keyser, WV 26726  
304.788.3838

Evan's Dairy Dip  
10257 Frankfort Highway,  
Fort Ashby, WV 26719  
304.790.212

Page's Ice Cream  
3169 Frankfort Highway,  
Ridgeley, WV 26753  
304.738.2200

Dairy Barn  
397 New Creek Highway,  
Keyser, WV 26726  
304.790.7459



## **Dining Cont.**

That Place  
10093 Frankfort Highway  
Fort Ashby, WV 26719  
304.999.2001

Fat Bottom Grille  
191 Armstrong Street,  
Keyser, WV 26726  
304.790.7581

La Tia Carmen  
418 Veterans Memorial Highway  
Ridgeley, WV 26753  
240.910.8194

Little Bigs  
126 Presidents Street,  
Fort Ashby, WV 26719

Putra's Hibachi & Sushi  
7958 Northwestern Turnpike,  
Keyser, WV 26726

Double B's Bar & Grill  
1680 New Creek Highway,  
Keyser, WV 26726  
304.790.7490

Hometown-The Last Stand  
96 N. Main Street,  
Keyser, WV 26726  
304.790.9999

## **Lodging**

SureStay Plus  
70 N. Tornado Way,  
Keyser, WV 26726  
304.597.1400  
855.213.0582

Keyser Inn  
51 Josie Drive,  
Keyser, WV 26726  
304.788.0913

Eagles Nest Campground  
1714 Patterson Creek Village Pike,  
Ridgeley, WV 26753  
304.298.4383

Happy Tails Pet Resort  
97 Cup Drive,  
Ridgeley, WV 26753  
304.726.8408

## **Unique Shopping**

Corner Bistro & Vintage Market  
10248 Frankfort Highway,  
Fort Ashby, WV 26719  
304.298.3242

New Leaf Greenhouse & Market  
34054 Northwestern Turnpike,  
Burlington, WV 26710  
304-289-5089

## **Golf Courses**

Polish Pines Golf Course  
US Route 220  
Keyser, WV 26726  
304.788.7780

Mill Creek Country Club  
US Route 50,  
Burlington, WV 26710  
304.289.3160

## **Outfitters**

Clyde's River Guides  
155 Burkhart Road,  
Ridgeley, WV 26753  
240.378.0830

## **Sugar Shacks**

Indian Water Maple Company  
1761 Burgess Hollow Road,  
New Creek, WV 26743  
304.788.1831

Potomac State College  
SAGE Sugar Shack  
471 Parkview Drive,  
Keyser, WV 26726  
304.788.7244

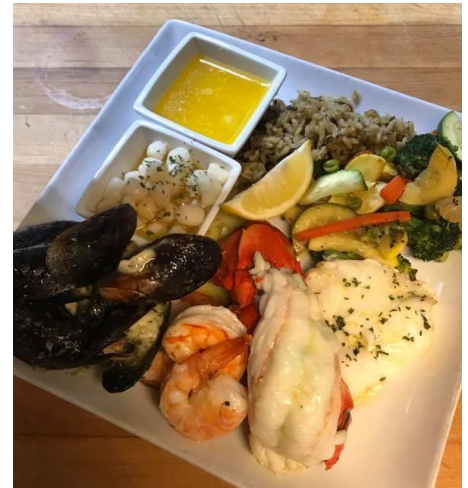


Photo from The Candlewyck



Photo from Queen's Point Coffee



